

THE
ARISTON
COMFORT
CHALLENGE

BRING THE DESIRED
**THERMAL
COMFORT
TO ANYONE
EVERYWHERE**

Discover more on:
aristoncomfortchallenge.com



ARISTON

COMFORT ALWAYS ON



**THE BRAND NEW
HOT WATER
EXPERIENCE.**

NEW LYDOS RANGE
ELECTRIC WATER HEATERS



**WHAT DOES COMFORT
MEAN TO YOU?**

ARISTON TAKES UP THE CHALLENGE OF BRINGING US THE COMFORT WE ALL DESIRE.

In this fast-growing world, we all desire a place to belong. **A place to feel settled and comfortable**, where each of us, at some point in our lives, can make new decisions to move on.

We want to keep this feeling along our lives, while we set up our first home, or when we nest and start a family, growing and aging together. In any case, we always hope for our beloved ones to stay nice and cosy, providing them with the warmth they deserve.

We all have our own idea of comfort: this might come in different forms, but it is what we all yearn for.

NO MATTER WHAT'S YOUR IDEA OF COMFORT. OUR CHALLENGE IS TO GIVE EVERYONE THE COMFORT THEY NEED. EVEN WHERE IT SEEMS HARD OR IMPOSSIBLE TO FIND.

Ariston always takes action to introduce **new ways of bringing comfort to every corner of the world:** finding where comfort hasn't been fully reached and innovating methods for adjusting the concept of comfort to people's lives.



UNIQUE TECHNOLOGIES, NEW MATERIALS AND HIGH TECH DESIGN FOR A COMPLETELY NEW HOT WATER EXPERIENCE

Give a warm welcome to long showers, long-lasting performance and maximum comfort.

Designed by Umberto Palermo and manufactured in Italy with premium materials, Ariston's new Lydos Range is ready to supply more hot water than standard water heaters with the same volume, always efficiently and quickly.

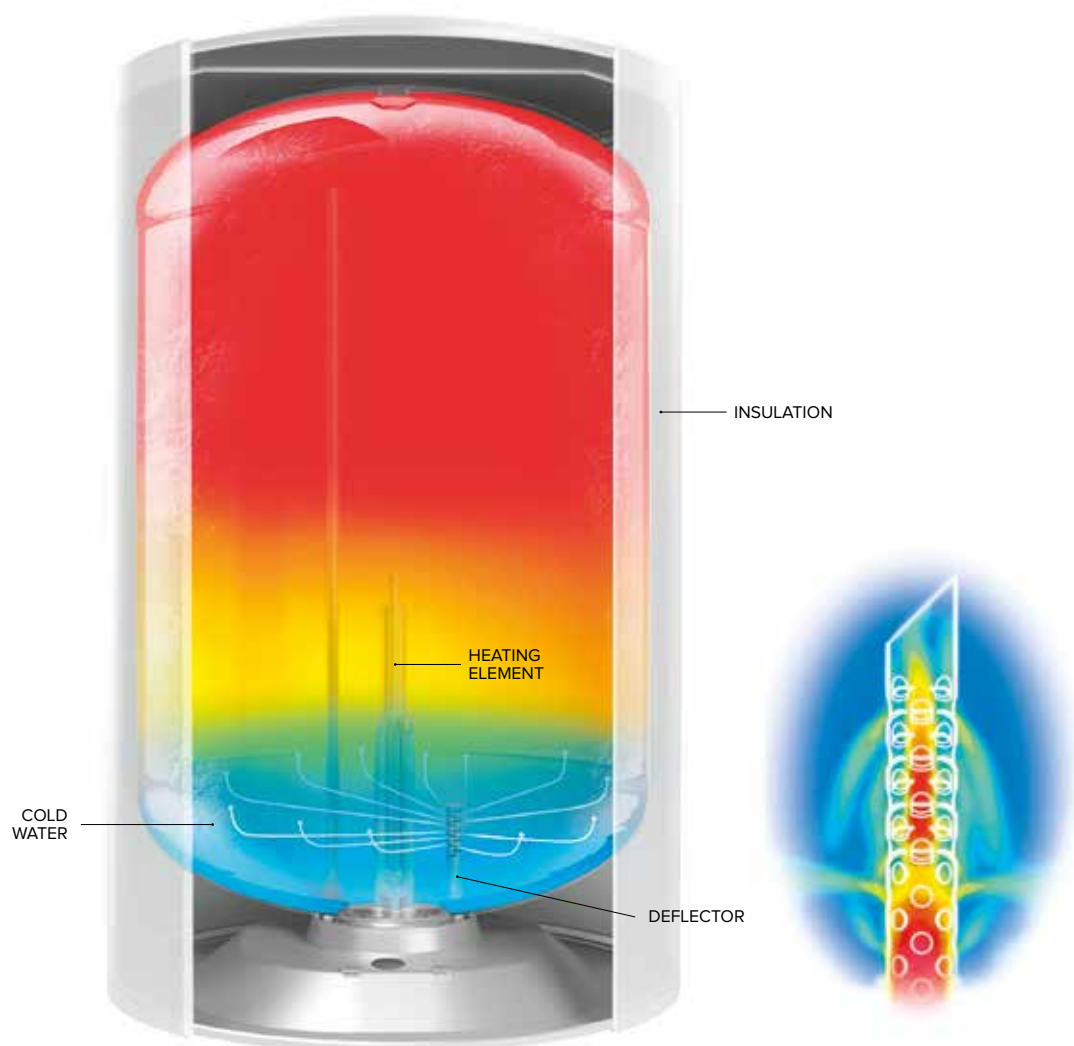
Just relax and take your time. **With the new Lydos Range the pleasure of hot water knows no bounds.**



LYDOS PLUS

WATERPLUS TECHNOLOGY ENJOY THE COMFORT OF AN EXTRA HOT SHOWER.

The ground-breaking patented* **WaterPlus technology** keeps the incoming cold water at the bottom of the tank, thus **reducing the mix of cold and stored hot water**. This allows up to **16% more hot water available****, to let you enjoy the comfort of an extra hot shower anytime you want.



* Patented in Spain, patent pending in IT, FR, TK, RU, CN, VN, UAE.

** Maximum estimated saving, depending on models. Comparison made using V40 test results at maximum operating temperature between current ATG products and new ATG products equipped with WaterPlus Technology.



T-FLEX HEATING POWER IS IN YOUR HANDS.

The new **T-FLEX software** optimally **allows to easily change the heating power**. Whenever needed, it allows to **boost the water heating's speed and power**, or to slow them down.



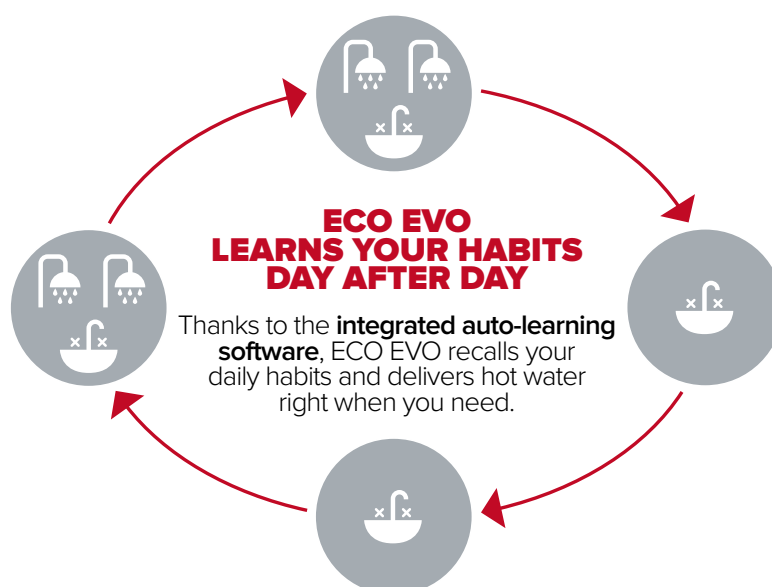
- / **Multi-power management:** possibility to choose different power of the heating element.
- / **Low power function***: lower the power of the heating element. A perfect solution when limited electrical power is available and for energy saving.
- / **Constant temperature:** precise and constant temperature management.

* For selected models.

ECO EVO FUNCTION THE HOT WATER YOU WANT, ANYTIME.



The innovative patent pending **ECO EVO function*** with **CoreTECH** memorizes your habits to deliver hot water while allowing you to conveniently **save up to 14% on your energy bill****. The product operates in compliance with top standards on energy efficiency within the electric water heating category***.



T-MAX AND SHOWER READY FULL COMFORT EVERYDAY.

Thanks to the new functions **T-MAX** and **Shower Ready** it is possible to speed up the production of hot water and visualize the number of hot shower on the display.

* Only available for electronic models.

** Estimated savings vs traditional electrical water heater based on the average European net demand of hot water (2007 VHK Ecodesign WH study). Savings change depending on product's capacity. Referred to B Class products.

*** B class for electronic models, C class for mechanic (ERP regulation).



TITANSHIELD TECHNOLOGY EVERY DAY LIKE THE FIRST DAY.



Ariston has been always committed to developing products that last through time. Twenty-five years ago, it was the first electric water heater manufacturer to use the TiTec titanium enamel coating. Today, Ariston renews its tradition by introducing the **innovative TitanShield**, a **new** double action technology **owned by Ariston** that ensures total protection against tank corrosion. Lydos inner surface features a double protection against corrosion thanks to the **titanium's** natural properties combined with the action of a large **magnesium anode**.

STRONG PROTECTION AGAINST CORROSION

The inner surface of the tank is coated with a **titanium enamel**, an anti-corrosion and rust-resistant material which prevents corrosion of the surface when in contact with warm water. The **magnesium anode** is able to stop effectively the oxidation process of the tank's inner surface and therefore prolongs the life of the water heater.

MINERAL BARRIER AGAINST LIMESCALE

Thanks to its unique properties, titanium naturally produces a dioxide film that **prevents limescale forming** on the inner surface of the tank.

LONG LASTINGNESS TITANIUM HEATING ELEMENT

		CORROSION RESISTANCE	LIMESCALING PROPERTIES	HEATING ELEMENT MAXIMUM WARRANTY PERIOD*	MANDATORY MAGNESIUM ANODE REPLACEMENT	
DURABILITY	NEW	TITANIUM <div>PATENTED SOLUTION</div>			5 YEARS	EACH 3 YEARS
	NEW	INCOLOY ENAMELED			3 YEARS	EACH 2 YEARS
		COPPER			2 YEARS	EACH 2 YEARS



100% CHECKED AND TESTED



Every single product is carefully and strictly tested on **quality, efficiency and safety**: our commitment for superior results.

INDUSTRY 4.0

The most advanced production system to monitor and control production across all phases.

AQUA ARISTON NET SMARTLY CONNECTED TO YOU.

Aqua Ariston Net App* connects you with Lydos Wi-Fi wherever you are and **ensures maximum comfort, energy saving up to 25%**** and **peace of mind**. Hot water waits for you, always available for whenever you want, for the relaxing shower after a long day outside.

COMFORT

- / **Shower-ready notification** for hot water.
- / Information on the **next available shower timing**.
- / **Water temperature** always updated.

ENERGY SAVING

- / **Weekly schedule** to have hot water just when needed.
- / **Energy Consumption reports** to continuously monitor your own habits.

PEACE OF MIND

Push notification in case of problems to the system to be always informed on product's status and to guarantee you assistance.



PLUG&PLAY INSTALLATION IN 3 STEPS

Connect your product in 3 simple steps to have all the Aqua Ariston NET advantages

PRODUCT INSTALLATION

ACCOUNT REGISTRATION

WI-FI CONFIGURATION AND
PRODUCT REGISTRATION



Download
the App
for free



For further information, visit our website ariston.com

* Aqua Ariston Net App, only on Wi-Fi models.

** Estimated saving up to 25% on daily basis, compared to Ariston standard mechanical product.



ITALIAN DESIGN BRING A MASTERPIECE INTO YOUR HOME.

A contemporary and captivating creation by the Italian designer **Umberto Palermo**. Engineered and manufactured **in Italy** with high quality materials, Lydos will enter your house as a unique interior design piece.

ALL-ROUND QUALITY

Rounded shape, sleek aesthetic finishes and no visible screws. All enhanced with **new materials** for optimised performance.

USER FRIENDLY INTERFACE

The **advanced hi-tech display** located at the front of the product resembles a smartphone screen and provides easy and fluent interaction together with easy temperature management.



Patent pending design.



ELECTRIC WATER HEATERS



	LYDOS WIFI			LYDOS PLUS			LYDOS ECO			LYDOS R		
	50	80	100	50	80	100	50	80	100	50	80	100
ENERGY CLASS	B			B			B			C		
TAPPING PROFILE	M			M			M			M		L
POWER (KW)	1,8			1,8			1.8*			1.8*		
INSTALLATION	Wall-Hung Vertical			Wall-Hung Vertical			Wall-Hung Vertical			Wall-Hung Vertical		
HEATING TIME (T=45 DEGREE CELSIUS) IN h,min	1,27	2,11	2,46	1,27	2,11	2,46	1,27	2,11	2,46	1,27	2,11	2,46
SMART DISPLAY	Yes			Yes			Yes			No		
ENAMELLING	Titanium			Titanium			Titanium			Titanium		
POWER SUPPLY	Single - Phase			Single-Phase			Single-Phase			Single-Phase		
HEATING ELEMENT	Enameled			Enameled			Copper			Copper		
ANODE	Magnesium			Magnesium			Magnesium			Magnesium		
COMFORT MODES	ECO EVO, WiFi, Number of shower available Programming function Remaining heating time			ECO EVO Number of shower available Holiday mode Programming function Remaining heating time			ECO EVO T-MAX Shower ready			Functioning/heating lamp		
TEMPERATURE CONTROL	Electronic			Electronic			Electronic			Mechanical		
PAGE	18			19			20			21		

*Other powers are available and can be found on the product page.



PRO1 ECO					PRO1 ECO SLIM					PRO1 ECO MULTIS					PRO1 R THERMO		PRO1 R					
50	80	100	120	150	30	40	50	65	80	30	50	80	100	120	80	100	50	65	80	100	120	150
B			C		A	B				A	B			C	C		C				-	-
M			L		S	M				S	M			L	M	L	M		L	-	-	
1,8*			1,8		1,8					1,6	1,8				1,8		1,8*	1,8	1,8*		1,8	
Wall-Hung Vertical/Horizontal					Wall-Hung Vertical/Horizontal					Multi-Position					Wall-Hung Vertical		Wall-Hung Vertical/Horizontal					
1,27	2,11	2,46	3,29	4,22	0,52	1,1	1,27	1,53	2,11	0,59	1,27	2,11	2,46	3,29	2,11	2,46	1,27	1,53	2,11	2,46	3,29	4,22
Yes					Yes					Yes					No		No					
Titanium					Titanium					Titanium					Titanium		Titanium					
Single-Phase					Single-Phase					Single-Phase					Single-Phase		Single -Phase					
Copper					Copper					Dry					Copper		Copper					
Magnesium					Magnesium					Magnesium					Magnesium		Magnesium					
Eco, T- Max Function, Shower Ready					Eco, T- Max Function, Shower Ready					Eco, T- Max Function, Shower Ready					Functioning/heating lamp		Functioning/heating lamp					
Electronic					Electronic					Electronic					Mechanical		Mechanical					
23					25					26					27		29					

LYDOS WI-FI

NEW



WIFI



WATER PLUS



ECO EVO FUNCTION



ABSOLUTE SAFETY SYSTEM



SHOWER READY



INCOLOY ENAMELED HEATING ELEMENT



TITAN SHIELD



ITALIAN DESIGN



1. ADVANCED PERFORMANCE

- / WaterPlus technology*: up to 16% more hot water available**.
- / ECO EVO function powered by CoreTECH: up to 14% energy saving.
- / The product operates in compliance with top ESWH regulations.

ENERGY CLASS



2. SMART CONNECTIVITY

- / Aqua Ariston Net App: the water heater can be controlled and set remotely via smartphone.
- / Up to 25%*** of energy saving with Wi-Fi app use.
- / Live push notification in case of problems.

3. FULL COMFORT

- / Weekly Programming function: up to 2 daily heating cycles.
- / Shower ready function: the number of showers currently available is shown on the app.
- / Remaining Heating Time Function: waiting time to reach the set temperature is shown on the app.



TECHNICAL DATA

		LYDOS WIFI 50 V 1,8K EN EU	LYDOS WIFI 80 V 1,8K EN EU	LYDOS WIFI 100 V 1,8K EN EU
Installation		V	V	V
Capacity	L	50	80	100
Max working pressure	bar	8	8	8
Power	KW	1,8	1,8	1,8
Voltage	V	230	230	230
IP class	IP	IPX3	IPX3	IPX3
Max working temp	°C	80	80	80
Heat dispersion 65°C	KWh/24h	0,99	1,35	1,56
Heating time ΔT 45C	h,min	1,27	2,11	2,46
Weight	Kg	16	20,5	24

DIMENSIONS

A	mm	528	733	885
---	----	-----	-----	-----

CODE

	3201986	3201987	3201988
Erp class	B	B	B
Tapping profile	M	M	M

The capacity indicated in this catalogue identifies the product category.
The effective capacity of the product is given in the relevant technical documentation provided with the product.

* Patented in Spain, patent pending in IT, FR, TK, RU, CN, VN, UAE

** Maximum estimated saving, depending on models. Comparison made using V40 test results at maximum operating temperature between current ATG products and new ATG products equipped with WaterPlus Technology.

*** Estimated saving up to 25% on daily basis, compared to Ariston standard mechanical product.

LEGEND

E Cold water inlet G 1/2"

U Hot water outlet G 1/2"

LYDOS PLUS NEW



WATER PLUS



ECO EVO FUNCTION



ABSOLUTE SAFETY SYSTEM



SHOWER READY



TITAN SHIELD



ENERGY EFFICIENT



ITALIAN DESIGN



DIGIT DISPLAY



1. ADVANCED PERFORMANCE

- / WaterPlus technology*: up to 16%** more hot water available
- / ECO EVO function powered by CoreTECH: up to 14% energy saving
- / Compliant with top ESWH regulations

2. FULL COMFORT

- / Weekly programming with up to 2 daily heating cycle
- / Shower ready icons showing the number of showers currently available
- / Visualization of remaining heating time before reaching set temperature
- / Holiday mode to save energy during long absences
- / Absolute safety system preserving the good functioning of the product

3. EVERLASTING QUALITY

- / Premium and robust environmental-friendly insulation material
- / Oversized magnesium anode to fight against corrosion

ENERGY CLASS



TECHNICAL DATA

		LYDOS PLUS 50 V 1,8K EN EU	LYDOS PLUS 80 V 1,8K EN EU	LYDOS PLUS 100 V 1,8K EN EU
Installation		V	V	V
Capacity	L	50	80	100
Max working pressure	bar	8	8	8
Power	KW	1,8	1,8	1,8
Voltage	V	230	230	230
IP class	IP	IPX3	IPX3	IPX3
Max working temp	°C	80	80	80
Heat dispersion 65°C	KWh/24h	0,99	1,35	1,56
Heating time ΔT 45C	h,min	1,27	2,11	2,46
Weight	Kg	16	20,5	24

DIMENSIONS

A	mm	528	733	885
---	----	-----	-----	-----

CODE

	3201869	3201870	3201871
Erp class	B	B	B
Tapping profile	M	M	M

The capacity indicated in this catalogue identifies the product category.

The effective capacity of the product is given in the relevant technical documentation provided with the product.

* Patented in Spain, patent pending in IT, FR, TK, RU, CN, VN, UAE

** Maximum estimated saving, depending on models. Comparison made using V40 test results at maximum operating temperature between current ATG products and new ATG products equipped with WaterPlus Technology.

LEGEND

E Cold water inlet G 1/2"

U Hot water outlet G 1/2"

LYDOS ECO

NEW


WATER PLUS



ECO EVO FUNCTION



ABSOLUTE SAFETY SYSTEM



SHOWER READY



TITAN SHIELD



ENERGY EFFICIENT



ITALIAN DESIGN



LED DISPLAY



1. ADVANCED PERFORMANCE

- / WaterPlus technology*: up to 16%** more hot water available
- / ECO EVO function powered by CoreTECH: up to 14% energy saving
- / Compliant with top ESWH regulations

2. FULL COMFORT

- / Manual and precise temperature setting
- / Shower ready icon showing first shower availability
- / T-MAX function to face unexpected hot water needs
- / Absolute safety system preserving the good functioning of the Product

3. EXCLUSIVE DESIGN

- / 100% made and designed in Italy
- / High-Tech user-friendly frontal interface

ENERGY CLASS



1,8 kW - TECHNICAL DATA

		LYDOS ECO 50 V 1,8K EU	LYDOS ECO 80 V 1,8K EU	LYDOS ECO 100 V 1,8K EU
Capacity	L	50	80	100
Installation	V	V	V	V
Power	KW	1,8	1,8	1,8
Voltage	V	230	230	230
Heating time (T=45 degree celsius)	h,min	1,27	2,11	2,46
Heat dispersion at 65 degree celsius	KWh/24h	0,99	1,35	1,56
Max working pressure	bar	8	8	8
Max working temperature	°C	80	80	80
Weight	kg	16	20,5	24
IP Class	IP	IPX3	IPX3	IPX3

DIMENSIONS

A	mm	528	733	885
---	----	-----	-----	-----

CODE

		3201857	3201858	3201859
With Plug and Cable		3201885	3201887	3201889
Erp class		B	B	B
Tapping profile		M	M	M

2 kW - TECHNICAL DATA

		LYDOS ECO 50 V 2K EU	LYDOS ECO 80 V 2K EU	LYDOS ECO 100 V 2K EU
Capacity	L	50	80	100
Installation	V	V	V	V
Power	KW	2	2	2
Voltage	V	230	230	230
Heating time (T=45 degree celsius)	h,min	1,18	1,58	2,29
Heat dispersion at 65 degree celsius	KWh/24h	0,99	1,35	1,56
Max working pressure	bar	8	8	8
Max working temperature	°C	80	80	80
Weight	kg	16	20,5	24
IP Class	IP	IPX3	IPX3	IPX3

DIMENSIONS

A	mm	528	733	885
---	----	-----	-----	-----

CODE

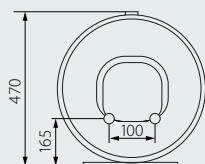
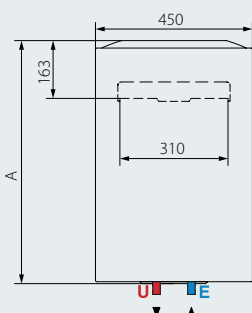
		3201860	3201861	3201862
Erp class		B	B	B
Tapping profile		M	M	M

The capacity indicated in this catalogue identifies the product category.

The effective capacity of the product is given in the relevant technical documentation provided with the product.

* Patented in Spain, patent pending in IT, FR, TK, RU, CN, VN, UAE

** Maximum estimated saving, depending on models. Comparison made using V40 test results at maximum operating temperature between current ATG products and new ATG products equipped with WaterPlus Technology.



LEGEND

E Cold water inlet G 1/2"

U Hot water outlet G 1/2"

LYDOS R NEW



WATER PLUS



EXTERNAL TEMPERATURE REGULATION



DOUBLE SAFETY THERMOSTAT



ENERGY EFFICIENT



TITAN SHIELD



ITALIAN DESIGN



1. ADVANCED PERFORMANCE

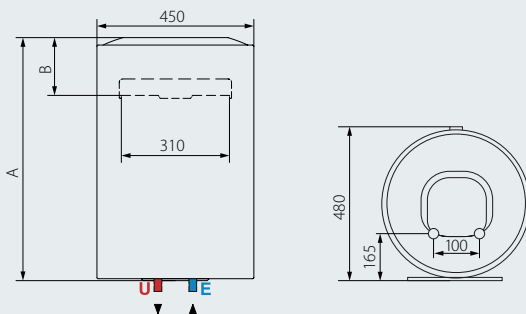
- / WaterPlus technology*: up to 16%** more hot water available
- / Compliant with top ESWH regulations

2. FULL COMFORT

- / External temperature setting
- / Double safety thermostat

3. EVERLASTING QUALITY

- / Premium and robust environmental-friendly insulation material
- / Oversized magnesium anode to fight corrosion
- / High quality titanium enameled tank



OVERALL DIMENSIONS

1.5 kW		LYDOS R 50 V	LYDOS R 80 V	LYDOS R 100 V
A	mm	538	743	895
B	mm	163	163	163
1.8 kW		LYDOS R 50 V 1,8K EU	LYDOS R 80 V 1,8K EU	LYDOS R 100 V 1,8K EU
A	mm	568	773	913
B	mm	193	193	181
2 kW		LYDOS R 50 V 2K EU	LYDOS R 80 V 2K EU	LYDOS R 100 V 2K EU
A	mm	568	773	913
B	mm	193	193	181
3 kW		LYDOS R 50 V 3K EU	LYDOS R 80 V 3K EU	LYDOS R 100 V 3K EU
A	mm	568	773	913
B	mm	193	193	181

The capacity indicated in this catalogue identifies the product category.

The effective capacity of the product is given in the relevant technical documentation provided with the product.

* Patented in Spain, patent pending in IT, FR, TK, RU, CN, VN, UAE

** Maximum estimated saving, depending on models. Comparison made using V40 test results at maximum operating temperature between current ATG products and new ATG products equipped with WaterPlus Technology.

LEGEND

- E Cold water inlet G 1/2"
- U Hot water outlet G 1/2"

LYDOS R

1,5 kW - TECHNICAL DATA

		LYDOS R 50 V	LYDOS R 80 V	LYDOS R 100 V
Capacity	L	50	80	100
Installation		V	V	V
Power	KW	1,5	1,5	1,5
Voltage	V	220-240	220-240	220-240
Heating time (T=45 degree celsius)	h,min	1,45	2,37	3,19
Heat dispersion at 65 degree celsius	KWh/24h	0,99	1,35	1,56
Max working pressure	bar	8	8	8
Max working temperature	°C	75	75	75
Weight	kg	16	20,5	24
IP Class	IP	IPX3	IPX3	IPX3

CODE

3201825

3201827

3201829

1,8 kW - TECHNICAL DATA

		LYDOS R 50 V 1,8K EU	LYDOS R 80 V 1,8K EU	LYDOS R 100 V 1,8K EU
Installation		V	V	V
Capacity	L	50	80	100
Max working pressure	bar	8	8	8
Power	KW	1,8	1,8	1,8
Voltage	V	230	230	230
IP class	IP	IPX3	IPX3	IPX3
Max working temp	°C	75	75	75
Heat dispersion 65°C	KWh/24h	0,99	1,35	1,56
Heating time ΔT 45C	h,min	1,27	2,11	2,46
Weight	Kg	16	20,5	24

CODE



With Plug and Cable

3201910

3201911

3201912

3201899

3201902

3201904

Erp class

C

C

C

Tapping profile

M

M

L

2 kW - TECHNICAL DATA

		LYDOS R 50 V 2K EU	LYDOS R 80 V 2K EU	LYDOS R 100 V 2K EU
Installation		V	V	V
Capacity	L	50	80	100
Max working pressure	bar	8	8	8
Power	KW	2	2	2
Voltage	V	230	230	230
IP class	IP	IPX3	IPX3	IPX3
Max working temp	°C	75	75	75
Heat dispersion 65°C	KWh/24h	0,99	1,35	1,56
Heating time ΔT 45C	h,min	1,18	1,58	2,29
Weight	Kg	16	20,5	24

CODE



Erp class

3201895

3201896

3201897

C

C

C

Tapping profile

M

M

L

3 kW - TECHNICAL DATA

		LYDOS R 50 V 3K EU	LYDOS R 80 V 3K EU	LYDOS R 100 V 3K EU
Installation		V	V	V
Capacity	L	50	80	100
Max working pressure	bar	8	8	8
Power	KW	3	3	3
Voltage	V	230	230	230
IP class	IP	IPX3	IPX3	IPX3
Max working temp	°C	75	75	75
Heat dispersion 65°C	KWh/24h	0,99	1,35	1,56
Heating time ΔT 45C	h,min	0,52	1,18	1,39
Weight	Kg	16	20,5	24

CODE



Erp class

3201931

3201932

3201933

C

C

C

Tapping profile

M

M

L

PRO1 ECO

NEW



WATER PLUS



ECO EVO FUNCTION



ABSOLUTE SAFETY SYSTEM



SHOWER READY



TITAN SHIELD



DISPLAY ECO



HIGH EFFICIENCY INSULATION



ITALIAN DESIGN

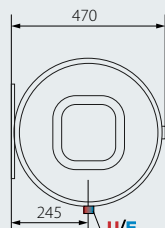
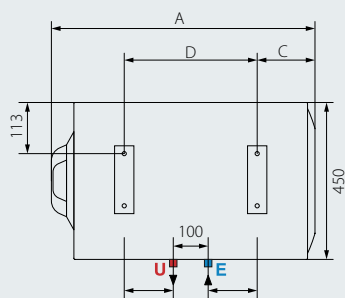
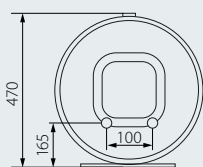
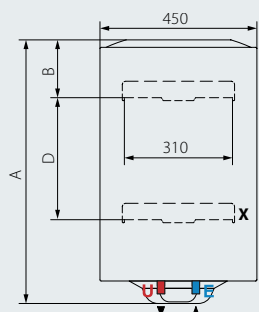


1. ADVANCED PERFORMANCE

- / WaterPlus technology*: up to 16%** more hot water available
- / Eco Evo function powered by CoreTech: up to 14% energy saving

2. FULL COMFORT

- / Manual and precise temperature setting
- / Shower ready icon showing first shower availability
- / T-MAX function to face unexpected hot water needs



OVERALL DIMENSIONS

1,2 kW

		PRO1 ECO 50 V 1,5K		
A	mm	553		
C	mm	163		
D	mm	159		

1,5 kW

		PRO1 ECO 50 V 1,5K	PRO1 ECO 80 V 1,5K	PRO1 ECO 100 V 1,5K	PRO1 ECO 80 H 1,5K	PRO1 ECO 100 H 1,5K
A	mm	553	758	913	758	913
B	mm	163	163	163	-	-
C	mm	-	-	-	178	178
D	mm	-	-	-	334	486

1,8 kW

		PRO1 ECO 50 V 1,8K PL EU	PRO1 ECO 80 V 1,8K PL EU	PRO1 ECO 100 V 1,8K PL EU	PRO1 ECO 120 V 1,8K PL EU	PRO1 ECO 150 V 1,8K PL EU	PRO1 ECO 80 H 1,8K PL EU	PRO1 ECO 100 H 1,8K PL EU
A	mm	553	758	913	1108	1283	758	913
B	mm	163	163	163	166	164	-	-
C	mm	-	-	-	-	-	178	178
D	mm	-	-	-	-	944	334	486

The capacity indicated in this catalogue identifies the product category.

The effective capacity of the product is given in the relevant technical documentation provided with the product.

* Patented in Spain, patent pending in IT, FR, TK, RU, CN, VN, UAE

** Maximum estimated saving, depending on models. Comparison made using V40 test results at maximum operating temperature between current ATG products and new ATG products equipped with WaterPlus Technology.

LEGEND

- E** Cold water inlet G 1/2"
- U** Hot water outlet G 1/2"
- X** Additional bottom fixing bracket only for 150 Lt model

PRO1 ECO

1,2-1,5 kW - TECHNICAL DATA

		PRO1 ECO 50 V 1,5K	PRO1 ECO 80 V 1,5K	PRO1 ECO 100 V 1,5K	PRO1 ECO 50 H 1,2K	PRO1 ECO 80 H 1,5K	PRO1 ECO 100 H 1,5K
Installation		V	V	V	H	H	H
Capacity	L	50	80	100	50	80	100
Max working pressure	bar	8	8	8	8	8	8
Power	KW	1,5	1,5	1,5	1,2	1,5	1,5
Voltage	V	220-240	220-240	220-240	220-240	220-240	220-240
IP class	IP	IPX3	IPX3	IPX3	IPX1	IPX1	IPX1
Max working temp	°C	80	80	80	80	80	80
Heat dispersion 65°C	KWh/24h	0,99	1,35	1,56	1,2	1,48	1,65
Heating time ΔT 45C	h,min	1,45	2,37	3,19	2,11	2,37	3,19
Weight	Kg	16	20,5	24	16	20,5	24


CODE

Code	3201441	3201442	3201443	3201444	3201445	3201446
Code (7 years warranty)	3201821	3201822	3201823	3201425	3201426	3201514

1,8 kW - TECHNICAL DATA

		PRO1 ECO 50 V 1,8K PL EU	PRO1 ECO 80 V 1,8K PL EU	PRO1 ECO 100 V 1,8K PL EU	PRO1 ECO 120 V 1,8K PL EU	PRO1 ECO 150 V 1,8K PL EU	PRO1 ECO 80 H 1,8K PL EU	PRO1 ECO 100 H 1,8K PL EU
Installation		V	V	V	V	V	H	H
Capacity	L	50	80	100	120	150	80	100
Max working pressure	bar	8	8	8	8	8	8	8
Power	KW	1,8	1,8	1,8	1,8	1,8	1,8	1,8
Voltage	V	230	230	230	230	230	230	230
IP class	IP	IPX3	IPX3	IPX3	IPX3	IPX3	IPX1	IPX1
Max working temp	°C	80	80	80	80	80	80	80
Heat dispersion 65°C	KWh/24h	0,99	1,35	1,56	1,6	1,65	1,48	1,65
Heating time ΔT 45C	h,min	1,27	2,11	2,46	3,29	4,22	2,11	2,46
Weight	Kg	16	20,5	24	27,6	32,4	20,5	24

CODE

 With Plug and cable	3201884	3201886	3201888	3700573	3700574	3201954	3201423
Erp class	B	B	B	C	C	B	B
Tapping profile	M	M	M	L	L	M	M

PRO1 ECO SLIM

NEW



1. FULL COMFORT

- / Manual and precise temperature setting
- / Shower ready icon showing first shower availability
- / T-MAX function to face unexpected hot water needs
- / Absolute safety system preserving the good functioning of the product

2. EVERLASTING QUALITY

- / Robust insulation material (polyurethane)
- / Magnesium anode to fight corrosion
- / High quality titanium enameled tank

TECHNICAL DATA

		PRO1 ECO 30 V SLIM 1,8K PL EU	PRO1 ECO 40 V SLIM 1,8K PL EU	PRO1 ECO 50 V SLIM 1,8K PL EU	PRO1 ECO 65 V SLIM 1,8K PL EU	PRO1 ECO 80 V SLIM 1,8K PL EU	PRO1 ECO 50 H SLIM 1,8K PL EU	PRO1 ECO 65 H SLIM 1,8K PL EU
Installation		V	V	V	V	V	H	H
Capacity	L	30	40	50	65	80	50	65
Max working pressure	bar	8	8	8	8	8	8	8
Power	KW	1,8	1,8	1,8	1,8	1,8	1,8	1,8
Voltage	V	230	230	230	230	230	230	230
IP class	IP	IPX3	IPX3	IPX3	IPX3	IPX3	IPX1	IPX1
Max working temp	°C	80	80	80	80	80	80	80
Heat dispersion 65°C	KWh/24h	114	1,04	1,74	1,96	1,53	1,39	1,43
Heating time ΔT 45C	h,min	0,52	1,10	1,27	1,53	2,11	1,27	1,53
Weight	Kg	12	14,1	16,8	18,6	21,5	16,8	18,6

OVERALL DIMENSIONS

A	mm	588	719	837	981	1178	837	981
B	mm	145	145	145	145	145	-	-
C	mm	-	-	-	-	-	491	635

CODE

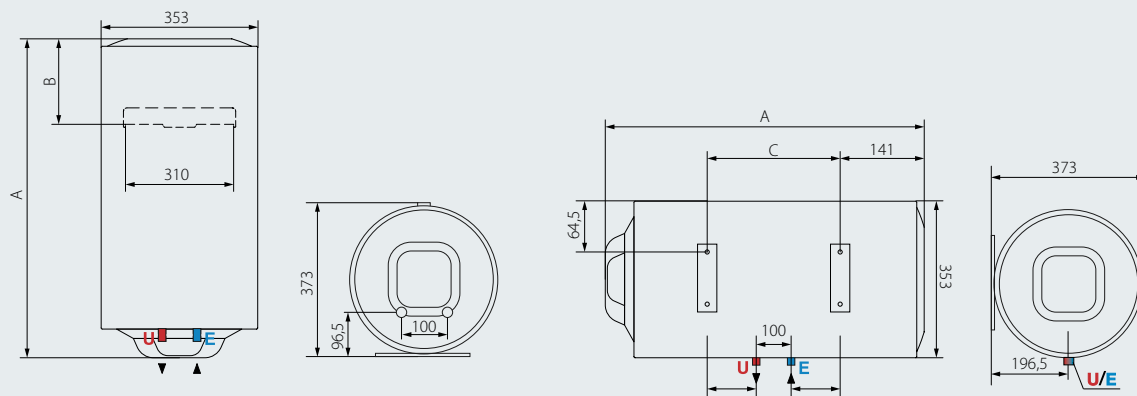
With Plug and Cable	3700508	3700584	3700509	3700510	3700575	3700576	3700585
Erp class	A	B	B	B	B	B	B
Tapping profile	S	M	M	M	M	M	M

The capacity indicated in this catalogue identifies the product category.

The effective capacity of the product is given in the relevant technical documentation provided with the product.

* Patented in Spain, patent pending in IT, FR, TK, RU, CN, VN, UAE

** Maximum estimated saving, depending on models. Comparison made using V40 test results at maximum operating temperature between current ATG products and new ATG products equipped with WaterPlus Technology.



LEGEND

- E Cold water inlet G 1/2"
- U Hot water outlet G 1/2"

PRO1 ECO MULTIS

NEW

DRY HEATING
TECHNOLOGYEASY
MAINTENANCE

MULTIPOSITION

WATER
PLUSECO EVO
FUNCTIONSHOWER
READYTITAN
SHIELDITALIAN
DESIGN

1. ADVANCED PERFORMANCE

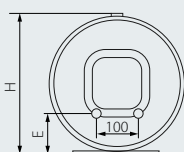
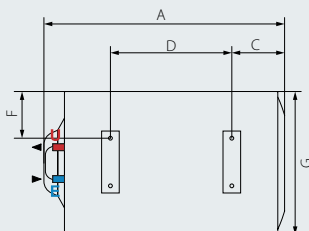
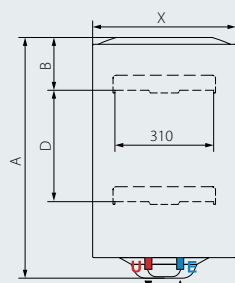
- / WaterPlus technology*: up to 16%** more hot water available
- / Eco Evo function powered by CoreTech: up to 14% energy saving

2. FULL COMFORT

- / Manual and precise temperature setting
- / Shower ready icon showing first shower availability
- / T-MAX function to face unexpected hot water needs
- / Absolute safety system preserving the good functioning of the product

3. EVERLASTING QUALITY

- / Robust insulation material (polyurethane)
- / Dry heating element : maximum protection against limescale deposit
- / Magnesium anode to fight corrosion
- / High quality titanium enameled tank



TECHNICAL DATA

		PRO1 ECO MULTIS 30 DRY SLIM EU	PRO1 ECO MULTIS 50 DRY SLIM EU	PRO1 ECO MULTIS 80 DRY EU	PRO1 ECO MULTIS 100 DRY EU	PRO1 ECO MULTIS 120 DRY EU
Installation		Multi-position	Multi-position	Multi-position	Multi-position	Multi-position
Capacity	L	30	50	80	100	120
Max working pressure	bar	8	8	8	8	8
Power	KW	1,6 (800x2)	1,8 (900x2)	1,8 (900x2)	1,8 (900x2)	1,8 (900x2)
Voltage	V	230	230	230	230	230
IP class	IP	IPX1	IPX1	IPX1	IPX1	IPX1
Max working temp	°C	80	80	80	80	80
Heat dispersion 65°C	KWh/24h	1,14	1,74	1,35	1,56	1,6
Heating time ΔT 45C	h,min	0,59	1,27	2,11	2,46	3,29
Weight	Kg	12	16,8	20,5	24	27,6

DIMENSIONS

A	mm	588	837	758	913	1108
B	mm	145	145	163	166	166
C	mm	141	141	174	177	177
D	mm	242	491	335	487	682
E	mm	96,5	96,5	165	165	165
F	mm	64,5	64,5	113	113	113
G	mm	353	353	450	450	450
H	mm	373	373	470	470	470

CODE

	With Plug and Cable	3700587	3700588	3201998	3201999	3700586
Erp class		A	B	B	B	C
Tapping profile		S	M	M	M	L

The capacity indicated in this catalogue identifies the product category.
The effective capacity of the product is given in the relevant technical documentation provided with the product.

* Patented in Spain, patent pending in IT, FR, TK, RU, CN, VN, UAE

** Maximum estimated saving, depending on models. Comparison made using V40 test results at maximum operating temperature between current ATG products and new ATG products equipped with WaterPlus Technology.

*** Estimated saving up to 25% on daily basis, compared to Ariston standard mechanical product.

LEGEND

E Cold water inlet G 1/2"

U Hot water outlet G 1/2"

PRO1 R THERMO

NEW



WATER PLUS



EXTERNAL TEMPERATURE REGULATION



DOUBLE SAFETY THERMOSTAT



TITAN SHIELD



HIGH EFFICIENCY INSULATION



ITALIAN DESIGN

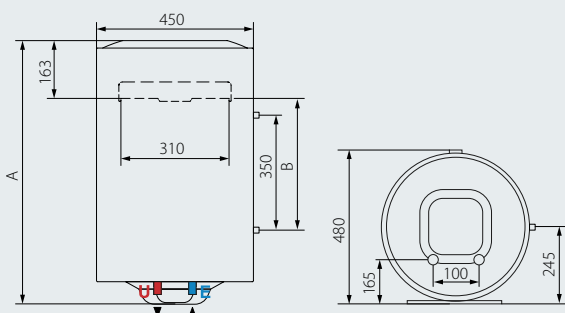


1. ADVANCED PERFORMANCE

- / WaterPlus technology*: up to 16%** more hot water available
- / Compliant with top ESWH regulations
- / Exchange coil for extra integration

2. FULL COMFORT

- / External temperature setting
- / Double safety thermostat



OVERALL DIMENSIONS

1,8 kW		PRO1 R 80 VTD 1,8K	PRO1 R 80 VTS 1,8K	PRO1 R 100 VTD 1,8K	PRO1 R 100 VTS 1,8K	PRO1 R 100 VTD 1,8K PL EU
A	mm	748	748	900	900	900
B	mm	370	370	522	522	522

1,8 kW		PRO1 R 80 VTD 1,8K EU	PRO1 R 80 VTS 1,8K EU	PRO1 R 80 VTD 1,8K PL EU	PRO1 R 100 VTD 1,8K EU	PRO1 R 100 VTS 1,8K EU
A	mm	748	748	748	900	900
B	mm	370	370	370	522	522

The capacity indicated in this catalogue identifies the product category.
The effective capacity of the product is given in the relevant technical documentation provided with the product.

* Patented in Spain, patent pending in IT, FR, TK, RU, CN, VN, UAE

** Maximum estimated saving, depending on models. Comparison made using V40 test results at maximum operating temperature between current ATG products and new ATG products equipped with WaterPlus Technology

LEGEND

- E Cold water inlet G 1/2"
- U Hot water outlet G 1/2"

PRO1 R THERMO

1,8 kW - TECHNICAL DATA

		PRO1 R 80 VTD 1,8K	PRO1 R 80 VTS 1,8K	PRO1 R 100 VTD 1,8K	PRO1 R 100 VTS 1,8K
Capacity	L	80	80	100	100
Installation		V	V	V	V
Coil pipes		Right	Left	Right	Left
Power	KW	1,8	1,8	1,8	1,8
Voltage	V	230	230	230	230
Heating time (T=45 degree celsius)	h,min	2,11	2,11	2,46	2,46
Heat dispersion at 65 degree celsius	KWh/24h	1,51	1,51	1,62	1,62
Max working pressure	bar	8	8	8	8
Max working temperature	°C	75	75	75	75
Weight	kg	23	23	26,5	26,5
IP Class	IP	IPX3	IPX3	IPX3	IPX3


CODE

	3201814	3201815	3201816	3201817
--	---------	---------	---------	---------

1,8 kW - TECHNICAL DATA

		PRO1 R 80 VTD 1,8K EU	PRO1 R 80 VTS 1,8K EU	PRO1 R 100 VTD 1,8K	PRO1 R 100 VTS 1,8K
Capacity	L	80	80	100	100
Installation		V	V	V	V
Coil pipes		Right	Left	Right	Left
Power	KW	1,8	1,8	1,8	1,8
Voltage	V	230	230	230	230
Heating time (T=45 degree celsius)	h,min	2,11	2,11	2,46	2,46
Heat dispersion at 65 degree celsius	KWh/24h	1,51	1,51	1,62	1,62
Max working pressure	bar	8	8	8	8
Max working temperature	°C	75	75	75	75
Weight PRO1 R VTD 1,8K	kg	23	23	26,5	26,5
Weight PRO1 R VTD 1,8K EU	Kg	21,5	21,5	21,5	
IP Class	IP	IPX3	IPX3	IPX3	IPX3

CODE

	3201913	3201914	3201915	3201916
 With Plug and Cable	3201908		3201909	
Erp class	C	C	C	C
Tapping profile	M	M	L	L

PRO1 R NEW



WATER PLUS



EXTERNAL TEMPERATURE REGULATION



DOUBLE SAFETY THERMOSTAT



TITAN SHIELD



HIGH EFFICIENCY INSULATION



ITALIAN DESIGN

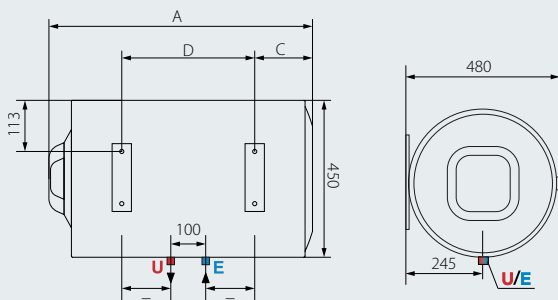
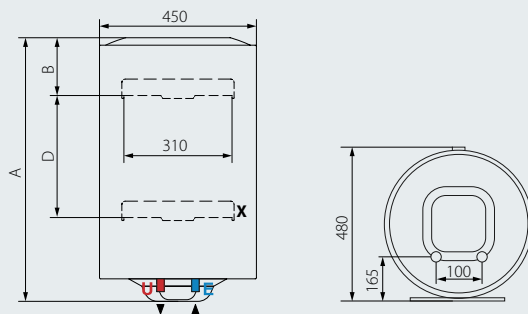


1. ADVANCED PERFORMANCE

- / WaterPlus technology*: up to 16%** more hot water available
- / Compliant with top ESWH regulations

2. FULL COMFORT

- / External temperature setting
- / Double safety thermostat



OVERALL DIMENSIONS

1.5 kW		PRO1 R 50 V	PRO1 R 80 V	PRO1 R 100 V	PRO1 R 50 H	PRO1 R 80 H	PRO1 R 100 H
A	mm	543	748	900	543	748	900
B	mm	163	163	163	-	-	-
C	mm	-	-	-	163	178	178
D	mm	-	-	-	159	334	486

1.8 kW		PRO1 R 50 V 1,8K PL	PRO1 R 80 V 1,8K PL	PRO1 R 100 V 1,8K PL	PRO1 R 65 H 1,8K PL EU	PRO1 R 80 H 1,8K PL EU	PRO1 R 100 H 1,8K PL EU	PRO1 R 120 V 1,8K PL	PRO1 R 150 V 1,8K PL
A	mm	543	748	900	665	748	900	1108	1283
B	mm	163	163	163	163	-	-	166	164
C	mm	-	-	-	-	178	178	-	-
D	mm	-	-	-	-	334	486	-	944

2 kW		PRO1 R 50 V 2K	PRO1 R 80 V 2K	PRO1 R 100 V 2K	PRO1 R 80 H 2K
A	mm	543	748	900	748
B	mm	163	163	163	-
C	mm	-	-	-	178
D	mm	-	-	-	334

3 kW		PRO1 R 80 H 3K EU	PRO1 R 100 H 3K EU
A	mm	748	900
C	mm	178	178
D	mm	334	486

The capacity indicated in this catalogue identifies the product category.

The effective capacity of the product is given in the relevant technical documentation provided with the product.

* Patented in Spain, patent pending in IT, FR, TK, RU, CN, VN, UAE

** Maximum estimated saving, depending on models. Comparison made using V40 test results at maximum operating temperature between current ATG products and new ATG products equipped with WaterPlus Technology

LEGEND

- E** Cold water inlet G 1/2"
- U** Hot water outlet G 1/2"
- X** Additional bottom fixing bracket only for 150 Lt model

PRO1 R

1,2-1,5 kW - TECHNICAL DATA

		PRO1 R 50 V	PRO1 R 80 V	PRO1 R 100 V	PRO1 R 50 H	PRO1 R 80 H	PRO1 R 100 H
Installation		V	V	V	H	H	H
Capacity	L	50	80	100	50	80	100
Max working pressure	bar	8	8	8	8	8	8
Power	KW	1,5	1,5	1,5	1,2	1,5	1,5
Voltage	V	220-240	220-240	220-240	220-240	220-240	220-240
IP class	IP	IPX3	IPX3	IPX3	IPX1	IPX1	IPX1
Max working temp	°C	75	75	75	75	75	75
Heat dispersion 65°C	KWh/24h	0,99	1,35	1,56	1,2	1,48	1,65
Heating time ΔT 45C	h,min	1,45	2,37	3,19	2,11	2,37	3,19
Weight	Kg	16	20,5	24	16	20,5	24


CODE

Code	3201435	3201436	3201437	3201438	3201439	3201440
Code (7 years warranty)	3201824	3201826	3201828	3201830	3201831	3201832

1,8 kW - TECHNICAL DATA

		PRO1 R 50 V 1,8K PL	PRO1 R 65 V 1,8K PL EU	PRO1 R 80 V 1,8K PL	PRO1 R 100 V 1,8K PL	PRO1 R 120 V 1,8K PL	PRO1 R 150 V 1,8K PL	PRO1 R 80 H 1,8K PL EU	PRO1 R 100 H 1,8K PL EU
Capacity	L	50	65	80	100	120	150	80	100
Installation		V	V	V	V	V	V	H	H
Power	KW	1,8	1,8	1,8	1,8	1,8	1,8	1,8	1,8
Voltage	V	230	230	230	230	230	230	230	230
Heating time (T=45 degree celsius)	h,min	1,27	1,53	2,11	2,46	3,29	4,22	1,35	1,55
Heat dispersion at 65 degree celsius	KWh/24h	0,99	?	1,35	1,56	1,6	1,65	1,48	1,65
Max working pressure	bar	8	8	8	8	8	8	8	8
Max working temperature	°C	75	75	75	75	75	75	75	75
Weight	kg	16	18,5	20,5	24	27,6	32,4	20,5	24
IP Class	IP	IPX3	IPX3	IPX3	IPX3	IPX3	IPX3	IPX1	IPX1


CODE

With Plug and Cable (PL)	3201818		3201819	3201820	3700566	3700567			
 With Plug and Cable (PL)	3201900	3201901	3201903	3201905			3201906	3201907	
Erp class	C	C	C	C	-	-	C	C	C
Tapping profile	M	M	M	L	-	-	M	M	M

2 kW - TECHNICAL DATA

		PRO1 R 50 V 2K	PRO1 R 80 V 2K	PRO1 R 100 V 2K	PRO1 R 80 H 2K	PRO1 R 80 H 2K EU
Installation		V	V	V	H	H
Capacity	L	50	80	100	80	80
Max working pressure	bar	8	8	8	8	8
Power	KW	2	2	2	2	2
Voltage	V	230	230	230	230	230
IP class	IP	IPX3	IPX3	IPX3	IPX1	IPX1
Max working temp	°C	75	75	75	75	75
Heat dispersion 65°C	KWh/24h	0,99	1,35	1,56	1,48	1,48
Heating time ΔT 45C	h,min	1,18	1,58	2,29	1,58	1,3
Weight	Kg	16	20,5	24	20,5	20,5

CODE

with Plug and Cable	3201810		3201811	3201812	3201813		
 With Plug and Cable							3201898
Erp class	-	-	-	-	-	-	C
Tapping profile	-	-	-	-	-	-	M

3 kW - TECHNICAL DATA

		PRO1 R 80 H 3K EU	PRO1 R 100 H 3K EU
Installation		H	H
Capacity	L	80	100
Max working pressure	bar	8	8
Power	KW	3	3
Voltage	V	230	230
IP class	IP	IPX1	IPX1
Max working temp	°C	75	75
Heat dispersion 65°C	KWh/24h	1,48	1,65
Heating time ΔT 45C	h,min	1,00	1,10
Weight	Kg	20,5	24

CODE

 Erp class	3201934	3201935
Tapping profile	C	C
	M	M

HOW TO READ THE SYMBOLS

The icons have been designed to facilitate the reading of the features of each product. Ariston makes it possible, from the very beginning, to quickly and easily identify performance levels, understand the different ranges and evaluate purchasing criteria. In short, users can familiarise themselves with each machine without becoming confused or wasting time, in line with the Ariston philosophy of always offering the customer - and the professional technician - a service which is clear and easy to use.



WIFI

Smart Connectivity - Aqua Ariston Net App



ENERGY EFFICIENT

Better exploitation of energy and renewable sources, enhanced performance



WATER PLUS

It keeps the incoming cold water at the bottom of the tank to ensure reduced mixing with stored hot water



HIGH EFFICIENCY INSULATION

Premium and robust environmental- friendly insulation material made up of Cyclopentane



SHOWER READY

It shows when enough water has been heated for a shower



INCOLOY ENAMELED HEATING ELEMENT

It is corrosion resistant and reduces limescale



ECO EVO FUNCTION

Automatic setting of its functioning based on your habits and needs of hot water



DISPLAY ECO

Frontal led control panel with smart thermometer



ABSOLUTE SAFETY SYSTEM

It is a set of functions preserving the good functioning of the product in case of energy or water failures



DIGIT DISPLAY

Easy interaction and easy temperature management thanks to the advanced hi-tech digit display



DOUBLE SAFETY THERMOSTAT

In case of malfunctioning, the precise thermostat blocks heating cycle before reaching too high temperature



LED DISPLAY

Simple and intuitive multifunction LED display



EXTERNAL TEMPERATURE REGULATION

Easy setting of the temperature, thanks to the external controller



ITALIAN DESIGN

The elegant aesthetics is designed in collaboration with Italian designers, an attention to details that dares to be shown off



TITAN SHIELD

It is an anti-corrosion and rust-resistant protective technology which prevents the surface from corroding even when it is in contact with warm water



EASY MAINTENANCE

Frontal access to all main components



DRY HEATING TECHNOLOGY

The heating element is not in direct contact with water for an extra safety



MUTIPOSITION

Flexible installation, vertical or horizontal position

AFTER SALE SERVICE



FIRST CLASS SERVICE

Ariston SERVICE model is designed to offer efficiency and professionalism to all its customers.



GENUINE ARISTON SPARE PARTS

Genuine ARISTON Spare Parts are built and tested to maintain the best quality and reliability of your Ariston product. Only using genuine components you will keep your system in the best standard configuration, fulfilling legal and warranty requirements.



PEACE OF MIND VALUABLE SERVICE

You can rest assured that you extend the life and the safety of your product and that in case of any event it will be dealt quickly and with professionalism.

Look up for the closest service center on ariston.com
or call Ariston Service **green number 800 111 222**





For further information visit our website
ariston.com



HOT WATER | HEATING | RENEWABLE | AIR CONDITIONING

